

# COUNTY OF KAUA'I

## IMPORTANT AGRICULTURAL LANDS STUDY

From August 2009 to December 2011, the County of Kaua'i partnered with the University of Hawai'i Mānoa, Department of Urban and Regional Planning (DURP) and Economic Research Organization (UHRO) to operationalize the County-specific directives of Act 183 (SLH 2005) *Important Agricultural Lands* (IAL) (HRS 205 Part III). Pursuant to Act 183, IAL are those lands:

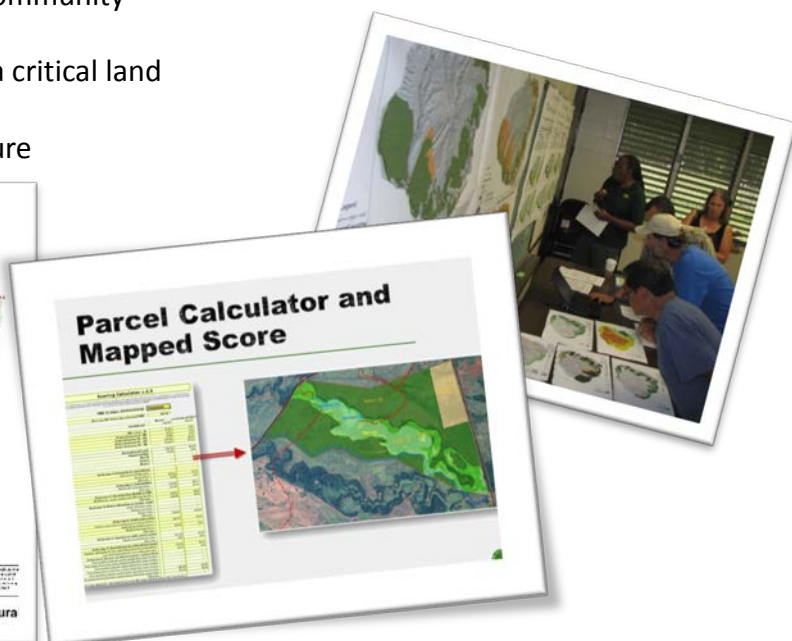
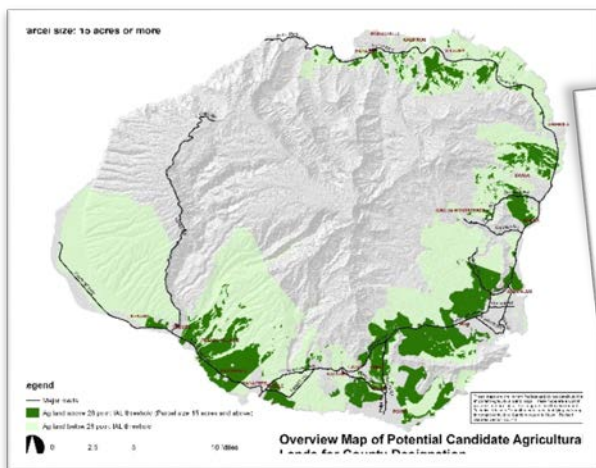
- ✓ capable of producing sustained high yields when treated and managed according to accepted farming methods and technology;
- ✓ contribute to the State's economic base and produce agricultural commodities for export or local consumption; and
- ✓ are needed to promote the expansion of agricultural activities and income for the future, even if currently not in production.

Public participation was a key element in interpreting the eight (8) criteria for identifying IAL, pursuant to Act 183:

1. Land currently used for agricultural production;
2. Land with soil qualities and growing conditions that support agricultural production;
3. Land identified under agricultural productivity rating systems;
4. Land types associated with Hawaiian agricultural uses, or unique agricultural crops;
5. Land with sufficient quantities of water to support viable agricultural production;
6. Land whose designation as important agricultural lands is consistent with general and community plans;
7. Land that contributes to maintaining a critical land mass
8. Land with or near support infrastructure

The results of this study include:

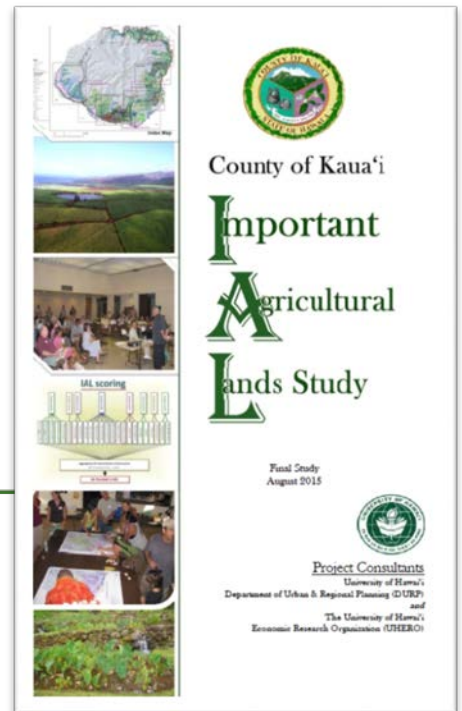
- ◆ Methodology and tools for considering IAL designations pursuant to Act 183 (SLH 2005).
- ◆ Maps and tools, showing agricultural lands that meet the criteria for IAL pursuant to Act 183 (SLH 2005).
- ◆ Recommendations for county-level incentives and program development for supporting IAL;
- ◆ Discussion and recommendations relating to support of agriculture on Kaua'i.



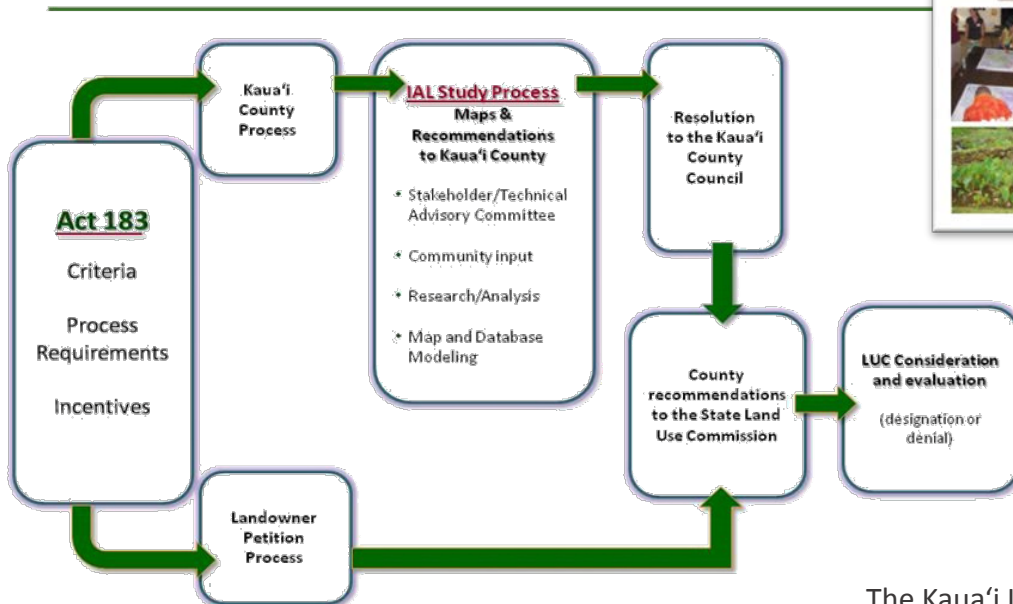
# KAUAI IAL STUDY RECOMMENDATIONS

1. Develop County-level incentives program, specifically to increase self-sufficiency/reliance
2. Establish a minimum goal for County-led designations
3. Support landowner/farmer-initiated designations of agricultural lands that at least meet criterion #5 “land with sufficient water to support viable agricultural production”
4. Use maps and tools developed through process when reviewing landowner/farmer-initiated petitions or for evaluating priority lands for designation by State or County
5. **Evaluate and integrate findings and recommendations of IAL Study into the General Plan Update for Kauai County**

| ESTABLISHING DESIGNATION GOALS   | Acres   |
|--|---------|
| Agricultural Lands on Kauai  | 136,908 |
| Total Lands meeting proposed criteria for recommendation #2  | 53,547  |
| Total lands already designated (by private landowners)   | 16,263  |
| Approximate acres of land in food crop production needed to feed current population of approximately 70,000 people           | 21,158  |
| Total Lands meeting criteria above minus State managed lands, lands already designated, and those slated for County projects | 20,125  |
| Phase I - designation goal, immediate to 5 years<br><i>(21,158 minus 16,263)</i>   | 4,895   |
| Phase II designation goal, 5 to 10 years<br><i>(20,4895 minus 4,895)</i>   | +15,230 |



## IAL Designation Process



The Kauai IAL Study can be found at:  
<http://plankauai.com/learn/references/>  
 For more information about the study please call 808.241.4061 or email [lkaiaokamalie@kauai.gov](mailto:lkaiaokamalie@kauai.gov)